



OLMSTED LINEAR PARK



Are You an Olmsted Linear Park Fan?

ALLIANCE

PRESIDENT'S COLUMN

Riotous Spring on Display in Olmsted Linear Park

By Julie J. Ralston

It's often said and I believe it with all my heart, that there is no place more show-stoppingly beautiful than Atlanta in the springtime. And now our overdue spring, with its riot of color and blossoms, is certainly showing it's best in every segment of Olmsted Linear Park.

The park has never been in better condition, thanks to Olmsted Linear Park Alliance's (OLPA) members, public and private partners and other supporters. More than \$10 million has been secured and invested in the 6-segment, historic park since OLPA's formation in 1997.

Some 2,600 new trees and shrubs, along with thousands of bulbs, have been lovingly planted to enhance the park's current and future beauty. You can stroll through the park segments on 6,000 feet of linear paths, one of the best walks anywhere this time of year, according to Creative Loafing who named our park the Best Leisurely Stroll in Atlanta (2012). In the past two years, OLPA has received several awards of excellence from the Georgia Trust for Historic Preservation and the Atlanta Urban Design Commission, with nods to the detail and diligence applied to its restoration.

Much has been achieved, but I believe our greatest focus should be to continue the historic preservation of this

continued on page 3



A Talk in the Park

By Jennifer J. Richardson

OLPA will continue its *Talk in the Park* series this spring and summer beginning in May. *A Talk in the Park* is a guided tour of all six segments of the linear park in two parts. Part one includes Dellwood and Deepdene Segments and includes history of the development of the linear park and its renovation, and concentrates on the woodland habitat of 22-acre Deepdene Park which is more like a nature and ecology walk. Part two (date to be announced) includes the first four segments: Springdale, Virgilee, Oak Grove and Shady Side park segments and includes history of Olmsted's work, development of the park and Druid Hills, stories of the prominent families that lived along the park, founding of the Olmsted Parks Society of Atlanta and the Olmsted Linear Park Alliance, history of the "Presidential Parkway" expressway and some flora and fauna. Part one tour is scheduled for Saturday, May 17, 10:00 a.m. to 11:30 a.m. Meet at the corner of South Ponce de Leon and Clifton Roads. The tours are \$10 for non-members of OLPA and free to members. All parts of Tour One are accessible to wheelchair and stroller.

Your tour guide will be Jennie Richardson, a Georgia Master Gardener (DeKalb County), an historian, Olmsted Advisory Board member, and wildflower and native plant expert.

To reserve your space, email Alex at AtlantaOlmstedPark@gmail.com.



Happenings in the Park?

By George Ickes, Park Director

Thankfully, the cold wet winter is now behind us! If you haven't yet, come out and take a stroll to see what's blooming. We just completed our winter planting program with the addition of 12 trees and over 100 new shrubs and 25 ferns. This spring, DeKalb County will be planting 25 trees in Deepdene. Join our virtual park by donating \$250 or more to sponsor our tree planting.

This winter we have had successful volunteer help from the Boys Scouts, The Frazer Center, an OLPA volunteer workday, and several volunteers that come out on a regular basis. Spring is a wonderful time to volunteer. If you are interested in volunteering please call George Ickes at 404.723.3118 or email us at AtlantaOlmstedPark@gmail.com. I would love for you to join me and come play in the dirt. If you are especially good, I will take you and your kids for a ride in our gator.

This spring, we plan to do a major pruning to reduce the height of the shrubs along the paths and place more horticultural markers in the park.

Weather permitting, we also plan to spend \$7,500 to repair and seal all the paths in the Park, except the paths in Deepdene, which were more recently installed. In addition, we plan to spend \$5,000 to repair and add a topcoat to the playground rubber surface. We thank all of you that have become members allowing us to pay for these activities.



Gators Welcome in the Park

We have a very special gator in the park. Yes, it's green. But, it's totally harmless, unless it gets a flat tire and then its driver often makes very loud noises.

This particular gator moves tools, leaves, branches and people across our 44-acre park and makes the maintenance a lot easier. We also enjoy giving members and park supporters of all ages tours through the park on the gator.

But the fact is, our gator is growing long in the tooth. It was purchased "used" 5 years ago and we urgently need a new gator.

Please consider making a special "gator gift" to help us keep the park looking great!



"Those who contemplate the beauty of the Earth find reserves of strength that will endure as long as life lasts."

— Rachel Carson

Dedicated to the memory of Mary Frances Marion Davidson who taught us all our love of flowers.

Gift of the Critz Family

Legacy Leader

By Justin Critz

Having grown up on Springdale Road in the 1970s and 1980s, my memories of Springdale Park involve a rusting chain link backstop and a playground that all too quickly became run-down and strewn with litter. We would play and have fun there, but even at that age I appreciated that the park was not a pretty place.

What a difference between that time and now. OLPA's work in restoring the parks has transformed this entire stretch of the Ponce corridor into a space that is beautiful and vibrant with activity. I often walk to work and one of my favorite views of the parks is from the western edge of Springdale Park, looking east at the expanse of verdant fields and majestic trees.

I actually enjoy the contrast between the traffic whizzing by on Ponce and the pastoral feel of the park. It makes me appreciate Olmsted's understanding of the need for such parks in our urban environments. My family and I are proud to support OLPA's efforts.

OLPA Elects 2014 Officers and Directors

At its January annual meeting, the OLPA board of directors enthusiastically and unanimously elected officers and directors of the Olmsted Linear Park Alliance for 2014. Officers include Julie Ralston, President; Toby Brooks, Vice President; Beth Grashof, Secretary; and Steven Cappel, Treasurer. Kirk Elifson, who so ably served as OLA President for five years, was elected Past President.

Julie Ralston, Kevin Steward and Jim Waits were elected to serve their final 3-year terms as General Directors. The 2014 Appointed Directors are Carolyn Hall, representing Druid Hills, and Jonathan Miller, representing NPU-N. This is Carolyn Hall's second 1-year term and Jonathan Miller's third and final 1-year term. The 2014 Council of Advisors (a 1-year term) includes Brian Bowen, Dennis Boyden, Justin Critz, Billy Hall, Warren Heemann, Beth Jones, Bob Kerr, Mary Reilly, Jennie Richardson, James Rollins, Sally Sears, Gale Walldorff and Joni Winston. For our full roster visit our website.

Julie Ralston, OLPA President

The newly elected OLPA president, Julie Ralston, has served in key roles at the Atlanta Regional Commission (ARC) for 29 years. Prior to her current appointment as Director for ARC's new Center for Strategic Relations, Julie directed an extensive program of internal and external communications. Before joining ARC, Julie spent three years each with the communications departments of the Georgia Division of the American Cancer Society and the national office of the Arthritis Foundation. Julie has served on the OLPA board for seven years, chairing the Communications and Marketing Committee and serving as Gala Chair in 2010. Julie is a graduate and former board member of Leadership DeKalb and the Regional Leadership Institute. She has been a member of the Emory Public Affairs Advisory Board and currently serves on the Clifton Corridor Community Partnership Advisory Committee. Julie and her husband Tim have lived in Druid Hills for 24 years.



Toby Brooks, OLPA Vice-President

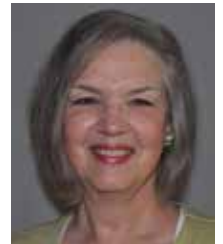
Toby Brooks has been an admirer and neighbor of the Olmsted parks since moving to Atlanta and Druid Hills in 2005. His professional experience is primarily in corporate management, having worked for 20 years for Columbus, IN-based Cummins, Inc.

At Cummins, he worked in a variety of operational, marketing and business strategy positions. In addition to serving on the OLPA board as Vice President, he currently serves on the board of Paideia School as treasurer, and as chairman of the board for The Community School – a Decatur-based program serving teens and young adults with autism spectrum disorders. He majored in Architecture as an undergraduate and is a lover of gardens and golf. Toby and his wife Martha live on Dellwood Park with the youngest of their three sons.



Beth Grashof, OLPA Secretary

Ms. Grashof was born and raised in Rochester, New York, where the historic buildings of the area would later influence her choice of professions. This love for architecture and history was brought together and solidified while studying architecture at the University of Florida, where she received her Master's degree in architecture with an emphasis in historic preservation. Professionally, Ms. Grashof provides architectural consulting services in historic preservation planning and design to architects, engineers and governmental and educational institutions. Ms. Grashof lives in Lake Claire in a 1919 bungalow, which she is lovingly preserving. She has been actively involved with OLPA since the late 1990s. In addition to serving as OLPA secretary, Beth served as the gala chair in 2013 and 2014.



President's Column continued

park, keeping it in pristine condition and protecting the extensive investments made through the efforts of so many. I also know we have the capacity to do more.

In addition to the successful "Dream in Green" annual gala, OLPA plans to host the Plein Air Painting Invitational in the spring of 2015, attracting artists from throughout the U.S. and abroad. The park is a natural for this kind of event, and we think it will be a great way to extend its beauty to canvas, and to a host of metro Atlantans through this signature art event.

Another focus will be to increase connectivity of the park to nearby green spaces like the Beltline, Fernbank Forest, the Frazer Center and watersheds like Peavine and Southfork. We plan to pursue stronger partnerships to explore opportunities and strategies for connecting these green assets.

This rare and historic jewel is truly a "green heart" of our community. If you are not a member of the Olmsted Linear Park Alliance, I encourage you to join today and support the next chapter in sustaining and expanding upon Olmsted's vision of a serene and beautiful retreat in our midst.

Dream In Green is a TEN!!!

By Jennifer J. Richardson and Beth Grashof

The 10th Annual Dream In Green Gala had everyone buzzing with excitement, claiming it was the best ever! Held at the Fernbank Museum of Natural History, the Dream in Green Gala is the signature event for Druid Hills and other nearby communities, and is the primary fund-raiser for the continued preservation of the Olmsted Linear Park. This year's Italian Style theme kept partygoers exhilarated when hearing arias from famous Italian operas performed by members of the Atlanta Opera and surprised and delighted by gloATL dance troupe members with their spontaneous dance moves and improvisation.

Farmhouse Design Studio created the gala invitations inspired by the colors of the Italian flag and graphic designer Barry Golivesky continued the Italian theme throughout our expanded outreach. Affairs to Remember Caterers provided a quintessential Italian menu, and Philip Thompson of The Lily and the Lion provided gorgeous Italian-inspired table decorations. Silent and live auction items included fine Italian wines, certificates for meals at wonderful Italian restaurants, and even a week's stay at an Italian Villa — amongst other treasures. And in the spirit of a big soiree, there was dancing right under the dinosaur in the atrium. Italian artisan desserts and coffees topped off a spectacular night.



This year, the OLPA gala was delighted to have as honorary chairs, recently retired Metro Atlanta Chamber of Commerce President Sam Williams and his wife, Nancy Williams. They were pleased to support the gala and helped present original artwork by Druid Hills' artist Rod Pittam as awards to special recipients. Fernbank Museum of Natural History was honored with the Frederick Law Olmsted Award for being an exemplary and continuous supporter of OLPA for over ten years. Susan Neugent, CEO of Fernbank, was excited to accept the award. Spencer Tunnell of Tunnell and Tunnel Landscape Architecture received an award for his inspired designs for the renovated linear park. Brian Bowen, a retired board member received an award for his tireless work in coordinating OLPA's plans with local



governments and the GADOT. Congratulations to all three worthy recipients of this recognition!

Members of the gala host and sponsor committees were also treated to a festive evening at the host/sponsor party, held a few weeks prior to the gala. OLPA board member Joni Winston welcomed guests into her home, providing a sumptuous feast, accompanied by fine Italian wines provided by OLPA board member Kirk Elifson (with the help of Sherlock's Wine Merchant in Decatur).

An event of this magnitude cannot take place without the assistance, devotion, and endless hours from our wonderful volunteers. It also cannot take place without the generous support of our hosts and our sponsors: Fernbank, Affairs to Remember, AGL Resources, CSX, NewFields, Bill Kaelin, Canterbury Press, MailChimp, Natalie Gregory, Virginie K Photography, Paris & Associates Realty, Farmhouse Design Studio, Personal Care, Tunnell & Tunnell, Plants Creative Landscapes, and Equifax.

With the support of our gala hosts and sponsors along with your participation and donations we are able to go well beyond the typical maintenance of mowing the grass by the city and county. By the end of February, we replaced dead plants and trees and installed many shrubs, plants, and other materials costing OLPA more than \$12,000. Thank you to each and every one who helped make this gala a "TEN" this year.



This event was so much fun, one wonders how the 2015 gala could possibly be better. But OLPA Executive Director, Alex McCray tells us the 11th annual gala will be the best ever! We can't wait!



*Thank you to our many Sponsors,
Host Committee Members, Gift-in-Kind
Donors and Gala Participants.
Your contributions helped us raise \$60,000 of
the \$300,000 we need this year for the
continued beautification and preservation of
the Olmsted Linear Park as an historical and
cultural asset for generations to come.*



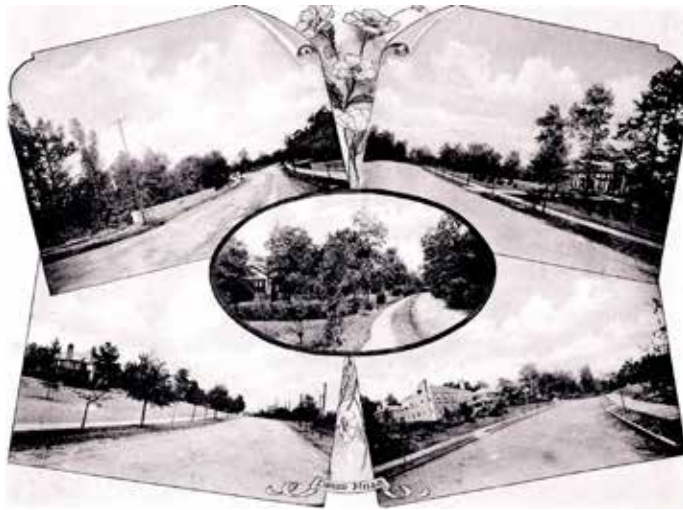
A Dog's Eye View

By *Murphy King, VII, Phi.Daoux*

My name is Murphy, a handsome mixed breed, and I was asked to write about my adventures through my favorite park, the Olmsted Linear Park. I write this as I rest on a bench just after running as fast as the leash and my human would allow. There are so many paths in the park and when I pass other dogs and their humans, I always stop to say hello with a friendly sniff and anxious wag of my tail. My favorite park segment is Deepdene. It's a favorite spot for many of my friends because there are so many places to explore and creeks to wade in, and the trails are easy on our paws. Squirrels and birds beware! Though I've never caught one, I still try. Along my travels, I like to mark things so my pals will know I've been



through the park. You cannot believe how many shrubs and trees are in the park. Marking them all is pretty exhausting. I'm thankful to my human for supporting the Park allowing me to have a big yard to play in. It makes being a dog pretty doggone rewarding!



Historical Preservation and Archive Ad-Hoc Committee at Work

By *Lynn Kerpel*

In 1890 Joel Hurt, Atlanta entrepreneur, street railway builder, one of the founders of Trust Company (now Suntrust), commissioner of a building by noted Chicago architects Burnham and Root (Root was a native Georgian) invited Frederick Law Olmsted, the father of American landscape architecture and creator of such notable landscapes as Central Park in New York, to Atlanta to assess the possibility of Olmsted's devising and executing a plan for a residential suburb on 1400 acres which Hurt, acting as the Kirkwood Land Company, had assembled in DeKalb County.

Olmsted was at that time working on the Biltmore in Asheville, and came to inspect the property. By 1893, a sketch plan existed for a linear park of six sections, "a public pleasure ground", which was intended to be the

heart of an "ideal residential suburb" to be named Druid Hills. The plan was to include a major thoroughfare for through traffic on the north side of the park and a lesser road on the south side for more leisurely driving along five of the six sections; on the remaining section this order was reversed. It also included a streetcar line—not in the main street—but in the park separated from the street and the park proper in an allee of trees.

After his initial involvement, Olmsted turned much of the responsibility for the work to his nephew and adopted son, John Charles Olmsted. A detailed plan was presented in 1905. The sections of the park were named for their landscape qualities (even though the natural was to be greatly enhanced) except for one named in memory of a Hurt daughter who had died as a child. We know the six sections as Springdale, Virgilee, Oak Grove, Shadyside, Dellwood and Deepdene. The plans called for five of the sections to be pastoral in nature, while the sixth was to be picturesque.

This is the start of more than 100 years of history that the OLPA ad-hoc committee is working to document and preserve. We will be writing articles, sharing historical documents and photos, video taping stories and creating recorded and printed walking tours. Please help support this effort with a donation that will help keep our history alive.



Olmsted's Virtual Park

By Alex McCray, Executive Director

Memberships of \$250 and more help Olmsted Linear Park Alliance plant a tree in this historic park. Unfortunately, we can't put a plaque under every tree, but we can recognize your generous donation on our virtual park.

A \$250 membership will sponsor a dogwood tree, a \$500 membership will sponsor a hickory tree and a \$1,000 membership will sponsor a large caliper oak tree.

Become a member today and be listed on our Atlanta Olmsted's Virtual Park at <http://www.atlantaolmstedpark.org/virtual-park>.



Thank You to Our Virtual Park Sponsor Members

— \$1000 or more —

William Berry
Martha & Toby Brooks
Druid Hills Civic Association
Druid Hills Garden Club
Katherine Fritts and Steven Cappel
Steven Glyn Cowart

Carolyn & William Hall
Sally Harbaugh
Paideia School
Claire Sterk and Kirk Elifson
Joanna & Roger Stroud
Fentress & Jim Waits

— \$500 - \$999 —

Jodi & Patrick Buckley
Sydney & Craig Cleland
Christine & David Cofrin
Sally Cohen and Rocky Atkins
Robin & Justin Critz

Nicole Forde
Diana Getz and Carl Mitchell
Richard & Linda Hubert
Jo Koch

Becky & Bob Lough
Dave McCauley and Gary Siebert
David Montgomery
Lynne Moody and Michael Thun
Holly & Martin York

— \$250 - \$499 —

Arborguard Tree Specialists
Mary Banks and Stuart Knechtel
Matthew & Natalie Bernstein
Carol & Aubrey Bush
Amy Durrell and Russell Currey
Lynn & Paul Farnham
Marilyn Fish and Bill Stiefel
Christy & Jim Grauley
Carole & Don Guffey
Nancy & George Ickes
Marguerite Ingram
Deborah Johnson and Jeff Bragg

Emily Elaine Katt
Lynn Kerpel
Zanice & Frank Muckler
Susan Muller and Steve Budnick
Nancy Newton and David Glass
Julie & Tim Ralston
Martha & George Sessions
Jane Seward
Kevin Steward and Philip Thompson
Amy Stout
Robert Wagner & Company, P.C.
Amy Zurborg



PO Box 5500 | Atlanta, GA 31107

Office

1788 Ponce de Leon Avenue, NE
Atlanta, GA 30307

404.377.5361

AtlantaOlmstedPark@gmail.com

www.AtlantaOlmstedPark.org

Executive Director: Alex McCray

Park Director: George Ickes

Editor: Jennifer J. Richardson

Graphic Design: Barry Golivesky

----- Please cut here and return to us in a stamped envelope addressed to OLPA, PO Box 5500, Atlanta, GA 31107 -----

Yes!

*I'd like to support Olmsted Linear Park, designed in 1893 by Fredrick Law Olmsted.
The Olmsted Linear Park Alliance was established as a nonprofit organization to sustain this unique
historical and cultural Atlanta asset for generations to come.*

Name _____

Address _____ Phone _____

Email _____ Yes/No: E-newsletter also/instead? (circle one)

Membership Categories (*Membership donations can be made online at www.atlantaolmstedpark.org*)

- \$35 Individual Member
- \$50 Family Member
- \$100 Bronze Level Member
- \$250 Silver member Level*
sponsors a dogwood tree
- \$500 Gold Level Member*
sponsors a hickory tree
- \$1,000 Platinum Level Member*
sponsors a large caliper oak

* A membership of \$250 or more will allow you to be recognized in our virtual park on our website as a tree sponsor.

.....
All donors giving \$100 or more will receive complimentary set of the note cards by Rod Pittman featuring the Park and donations of \$250 or more a 1905 map reproduction designed by Fredrick Law Olmsted.

Please check here if you would like us to arrange for your annual contribution with monthly installments.

Thank you for your donation! Your donation is tax deductible. OLPA is a 501(C) 3 nonprofit organization.